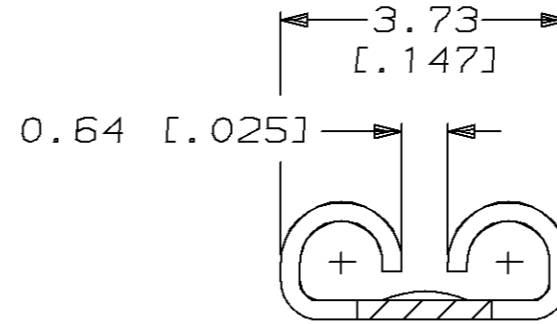
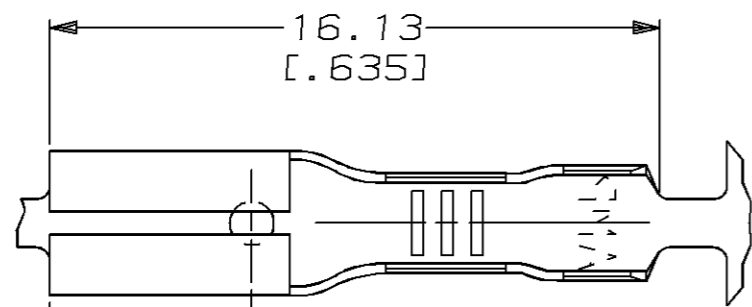


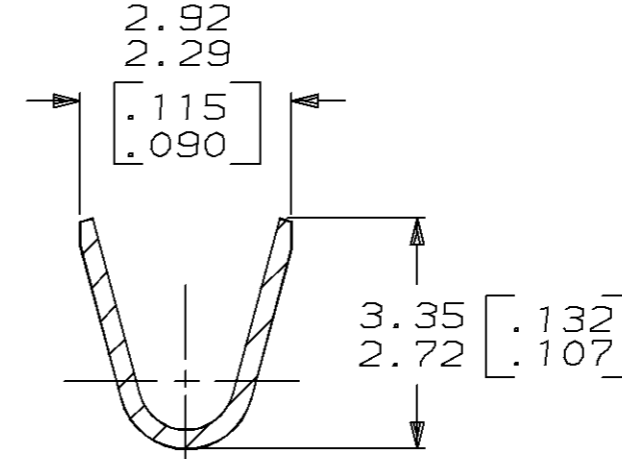
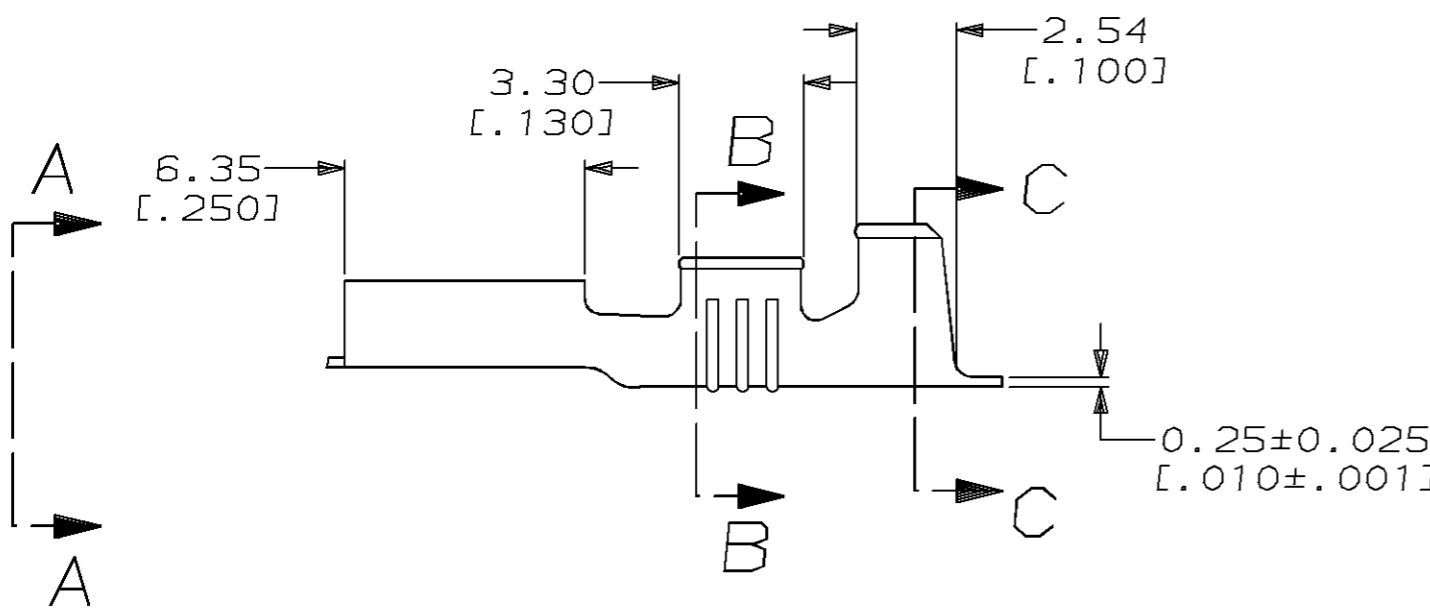
THIS DRAWING IS UNPUBLISHED. RELEASED FOR PUBLICATION, 19 .
 © COPYRIGHT 19 BY AMP INCORPORATED. ALL INTERNATIONAL RIGHTS RESERVED.

LOC	DIST	P	F	ZONE	LTR	REVISIONS	DATE	APPD
AF	50				B	REDRAWN PER 0710-0027-96	2/7/96	JR/PD

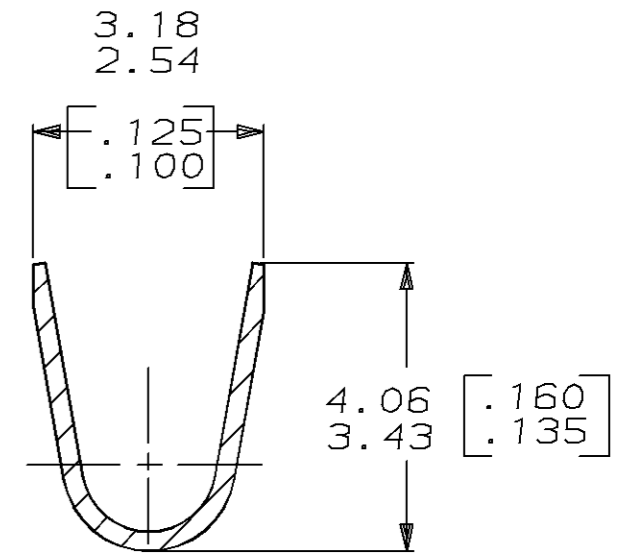
- CONTINUOUS STRIP ON REELS.
- WIRE SIZE [#20-#16] AWG.
- INSULATION RANGE 1.52-2.54 [.060-.100] DIA.
- MATING TAB THK 0.51 ± 0.025 [.020±.001].



VIEW A-A
SCALE 10:1



SECTION B-B
SCALE 10:1



SECTION C-C
SCALE 10:1

61408-1

PART NO

DO NOT SCALE PRINT. UNLESS SPECIFIED DIMENSIONS IN mm [INCHES] TOLERANCES ON: 2 PLC DEC ± 0.38 [.015] 3 PLC DEC ± - ANGLES ± -	DR 2/7/96 JR RUTH	AMP AMP Incorporated Harrisburg, PA 17105-3608
	CHK 2/7/96 MS FEHER	
	APPD 2/7/96 P DESANTIS	NAME
	APPD 2/7/96 V KARABCEVSKY	RECEPTACLE, FASTON, 2.79 [.110] SERIES
MATERIAL H04 BRASS	PRODUCT SPEC -	SIZE
FINISH PRE-TIN	APPLICATION SPEC -	CAGE CODE
	WEIGHT -	DRAWING NO
		SCALE
		SHEET

THIS DRAWING IS A CONTROLLED DOCUMENT FOR AMP INCORPORATED. IT IS SUBJECT TO CHANGE AND THE CONTROLLING ENGINEERING ORGANIZATION SHOULD BE CONTACTED FOR THE LATEST REVISION.